



AUTOMATIC JANITOR

High Efficiency Half Stall Washout Urinal Flush Valve System

Model
HSM101812U10AJ

Description

Battery Powered, Programmable Timer Operated AUTOMATIC JANITOR Side Mount Complete HEU System with Exposed Urinal Flushometer and Vitreous China Fixture.

Flush Cycle

Model HSM101812U10AJ (1.0 gpf/3.8 Lpf)

Specifications

Flushometer Specification (Model HSM-801AJ-CU-10)

- Patented Gear Motor Drive
- Provides Significant Water Savings
- Keeps Cleaning Pipes and Porcelain When Facility is Closed
- Helps to Carry Liquid Waste Required Distance
- Easy Programming and Installation
- Programmable Settings Allow Flushing Once Every 1, 2, 3, 4, 6, 12, or 24 Hours for Ultimate Water Savings
- Works in Conjunction With a Urinal Deodorizer/Screen
- Vandal and Water Resistant Design
- Chrome Plated Metal Housing
- Quiet Operation
- Manual Flush Override Option Using Special Key
- *Mechanical Override Works When Batteries are Drained
- Operates on (4) "C" Alkaline Batteries (Included)
- Battery Life - 3+ Years
- Beeping "Low Battery" Indicator
- Easy Battery Replacement-No Water Shut Off Necessary
- Uses Proprietary Silicone Diaphragm with Filtered Bypass
- 3/4" I.P.S. Angle Stop
- Adjustable Tailpiece
- High Back Pressure Vacuum Breaker with Single Piece Hex Coupling Nut
- Spud Coupling and Flange for 3/4" Top Spud
- Sweat Solder Kit and Wall Flange with Set Screw
- High Efficiency For Water Conservation

Compliance & Certifications

- ASSE 1037-2015
- ASME A112.1035-2015
- CSA B125.37-15



For Finish Variations Please Consult Factory

Fixture Specification (Model AUU-1018-12)

- Complies with ADA Accessible Standards
- White Color
- Wall Hung Vitreous China
- Washout Flushing Action
- Extended Privacy Shields
- Elongated Rim
- Integral Flushing Rim
- Integral Trap
- 3/4" (19mm) I.P.S. Top Spud Inlet (Included)
- 2" (50mm) NPT Outlet Flange (Included)
- 100% Factory Tested
- Hanging Bracket (2 included)

Compliance & Certifications

- ASME A112.19.2/CSA B45.1
- Energy Act of 1992
- ADA- With installation consideration for section 604 Water Closets, Accessibility Guidelines.
- ICC/ANSI A117.1
- TAS - With installation consideration for section: 4.16.3. Adult seat height 17" (432mm) to 19" (483mm).
- CSA B651 - With installation consideration for Clause 4.3.6 of the standard.
- ICC-ES PMG[®] Certified



The AUTOMATIC JANITOR Advantage

The AUTOMATIC JANITOR is a fully programmable automatic timer flush control for urinals. The AUTOMATIC JANITOR can be programmed to flush once every 1, 2, 3, 4, 6, 12, or 24 hours. The AUTOMATIC JANITOR was designed to be used in conjunction with a urinal deodorizer/screen to provide for ultimate water efficiency while eliminating odors.



Warranty
5 Years



Architect/Engineer Approval

Job Name	_____
Date	_____
Model Specified	_____
Quantity	_____
Variations Specified	_____
Customer/Wholesaler	_____
Contractor	_____
Architect	_____

The information contained in this document is subject to change without notice.
Revision (10/17)

Plumbing System Requirements

- Minimum Flowing Pressure: 25 PSI
- Maximum Static Pressure: 80 PSI
- Minimum Flow Rate: 18 GPM



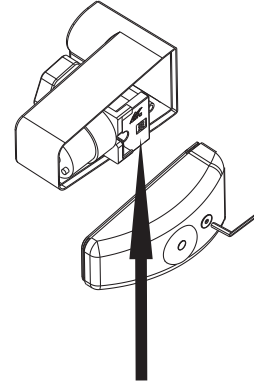
AUTOMATIC JANITOR

High Efficiency Half Stall Washout Urinal Flush Valve System

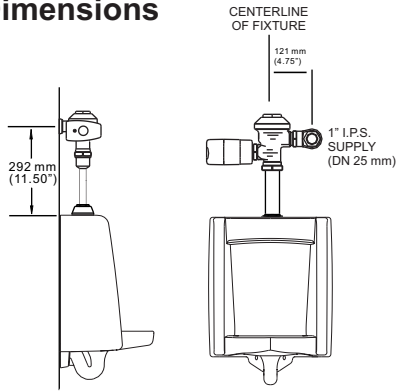
Model
HSM101812U10AJ

Specifications

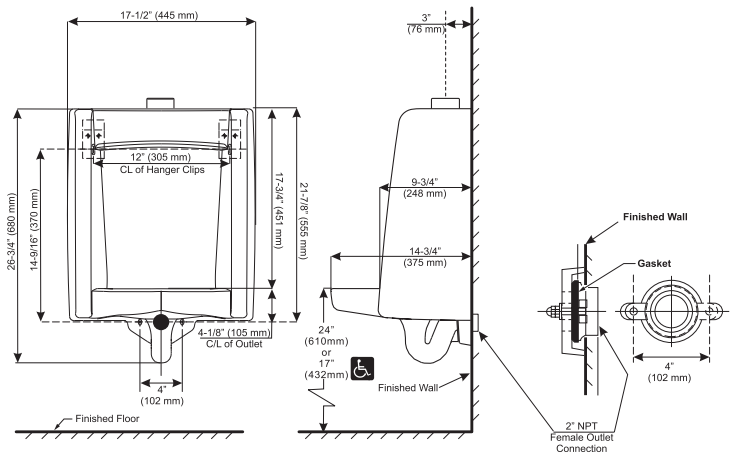
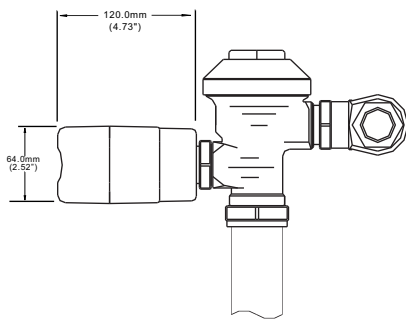
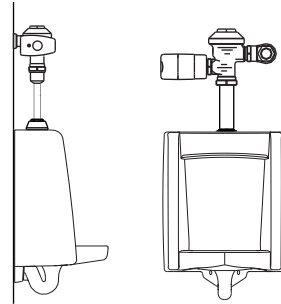
Outer Casing:	Standard-Chrome Metal
Operating Water Pressure:	15 PSI - 100 PSI
Actuation Type:	Programmable Timer
Battery Type:	Four "C" Alkaline Batteries
Battery Life:	3+ Years
Flush Cycle:	1.0 gpf / 3.8 Lpf
Manual Override:	Manual Flush Key (Mechanical)



Dimensions



Application



Flush Program Guide

	= 10 Seconds (Flush Test Setting)
	= 1 Hour
	= 2 Hours
	= 3 Hours
	= 4 Hours
	= 6 Hours
	= 12 Hours
	= 24 Hours

Disclaimer

Note: All vitreous china dimensions shown in these drawings are nominal and not to scale. Dimensions can vary within the tolerances established in the governing ASME A112.19.2/CSA B45.1 standard. It is important to consider this when planning rough-in and plumbing layouts.

Advanced Modern Technologies Corporation • 19800 Nordhoff Place • Chatsworth, CA 91311
Tel: (818) 883-2682 • Toll Free: (800) 874-7822 • Fax: (818) 883-2620 • www.amtccorporation.com