



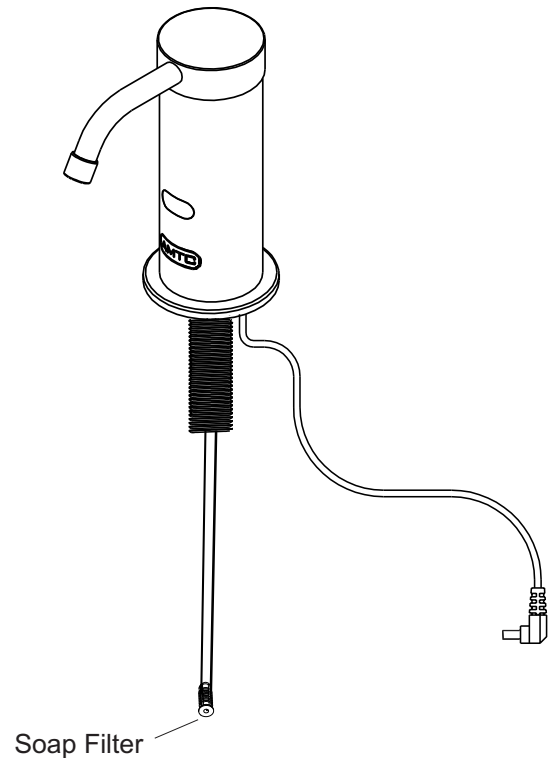
ASD-400 LIQUIDFLO™ AUTOMATIC LIQUID SOAP DISPENSER INSTALLATION & OPERATION MANUAL

IMPORTANT PRE-INSTALLATION NOTE

READ BEFORE INSTALLATION:

During the initial installation you may need to prime the soap 4-5 times to get the soap to pump through the spout. In some cases there may be some trapped air in the system that does not allow the soap to initially prime. If this is the case you will need to blow through the soap filter to clear the trapped air. Then prime the soap again. The soap should now prime through the spout.

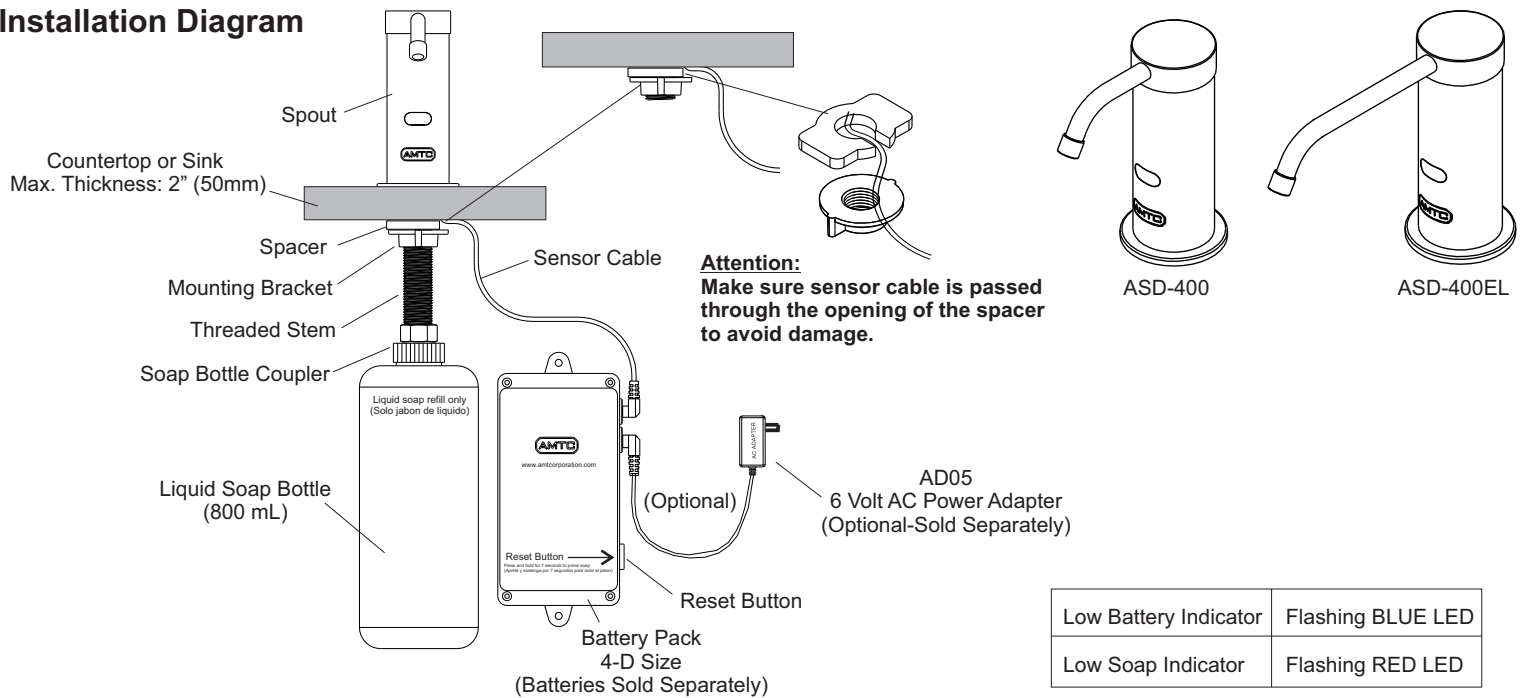
For further assistance please call
Technical Support at 1-800-874-7822.





ASD-400 LIQUIDFLO™ AUTOMATIC LIQUID SOAP DISPENSER INSTALLATION & OPERATION MANUAL

Installation Diagram



Installation Instructions (refer to installation diagram above)

1. If hole is not present drill a 1" (25.4mm) hole on countertop (refer to installation template on page 4).
2. Mount the spout onto the countertop or sink and hand tighten mounting bracket and spacer without damaging sensor cable.
3. Install batteries into battery pack and mount battery pack onto back wall using provided hardware (battery pack must be installed within 15" (380mm) of spout).

Note: An optional 6 Volt AC power adapter (Part# AD05) can be purchased separately if electrical power is required.

4. Screw soap bottle coupler onto threaded stem and hand tighten.
5. Fill up bottle with liquid soap (**Important: Use low viscosity liquid hand soap with no abrasives**).

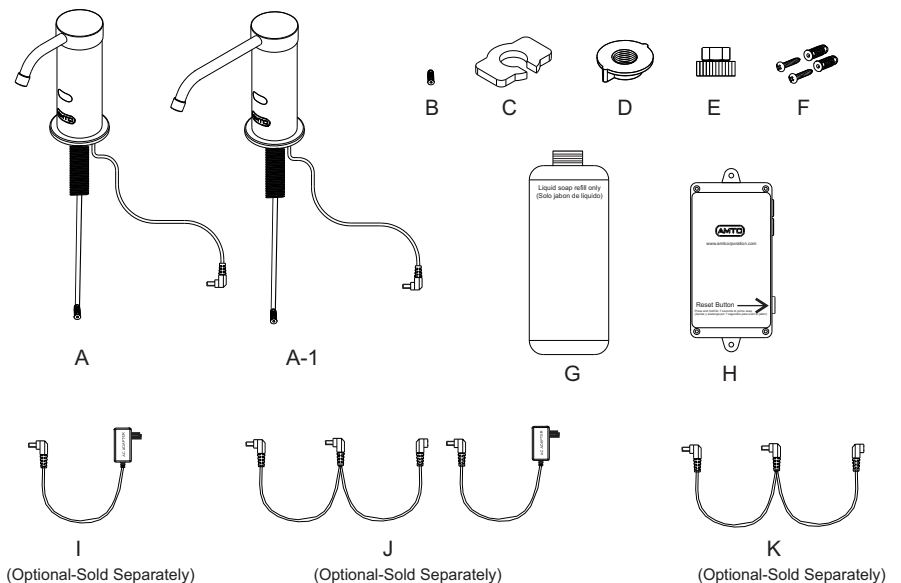
***Viscosity Range: (mPa·s or Cp): 100-3800 / pH Range: 5.0 - 9.0**

***Failure to use soap products within the required range of viscosity and pH may result in damage to product and void warranty.**

6. Screw soap bottle onto soap bottle coupler and hand tighten.
7. Connect sensor cable onto battery pack (you will hear pumps and soap will purge for approximately 5 seconds).
8. Soap dispenser is now ready for use.

Parts List

Ref #	Part #	Description
A	ASD-4SPT	Spout
A-1	ASD-4SPTTEL	EL Spout (6" Long)
B	ASD-4FA	Spout Filter Assembly
C	ASD-4SPA	Spacer
D	ASD-4MB	Mounting Bracket
E	ASD-4SBC	Soap Bottle Coupler
F	ASD-4MSC	Mounting Screws
G	ASD-4SB	800ml Soap Bottle
H	ASD-4BP	Battery Pack
I	AD05	6-Volt AC Power Adapter (Optional)
J	AD05-2	6-Volt AC Power Adapter w/Extension for 2 Devices
K	AD05-2-EXT	Extension Only for AC Power Adapter

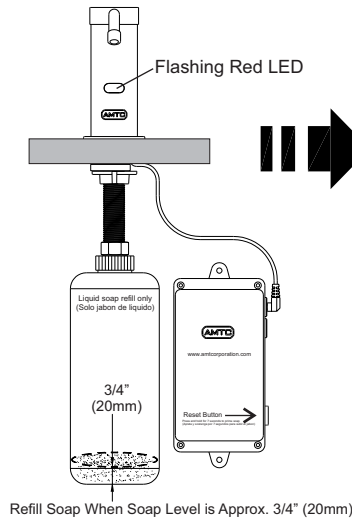




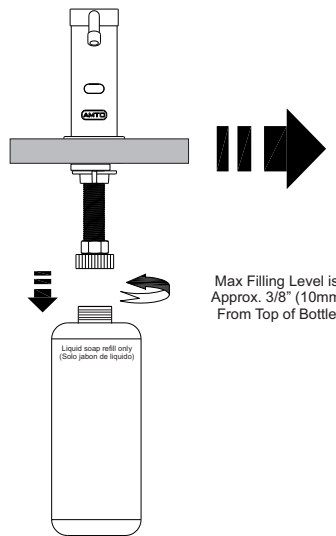
ASD-400 LIQUIDFLO™ AUTOMATIC LIQUID SOAP DISPENSER INSTALLATION & OPERATION MANUAL

Soap Refill Instructions:

1. Flashing Red LED Indicates Low Soap

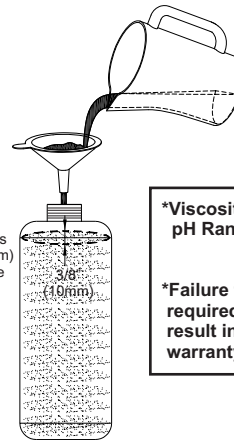


2. Unscrew Liquid Soap Bottle



3. Refill Liquid Soap Bottle

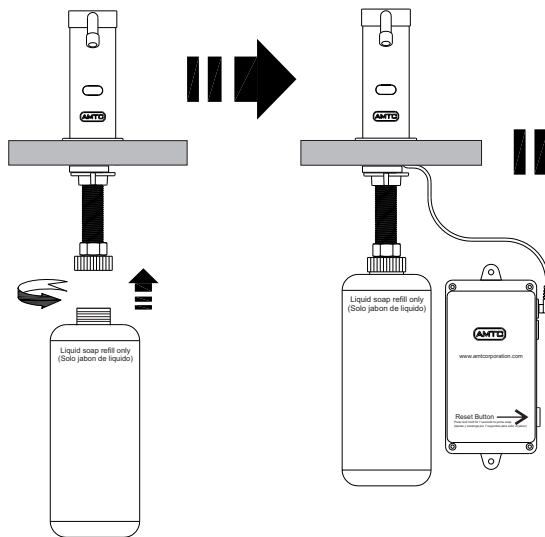
Important: Use low viscosity liquid hand soap with no abrasives.



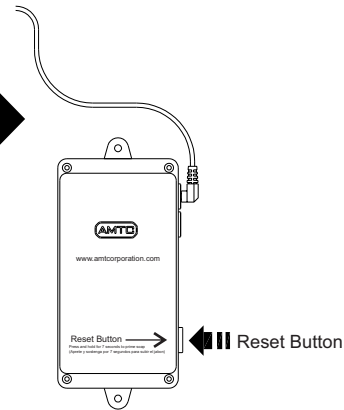
*Viscosity Range: (mPa·s or Cp): 100-3800
pH Range: 5.0 - 9.0

*Failure to use soap products within the
required range of viscosity and pH may
result in damage to product and void
warranty.

4. Re-install Liquid Soap Bottle



5. Press and Hold Reset Button for 7 Seconds to Prime New Soap and Reset Flashing Red LED.



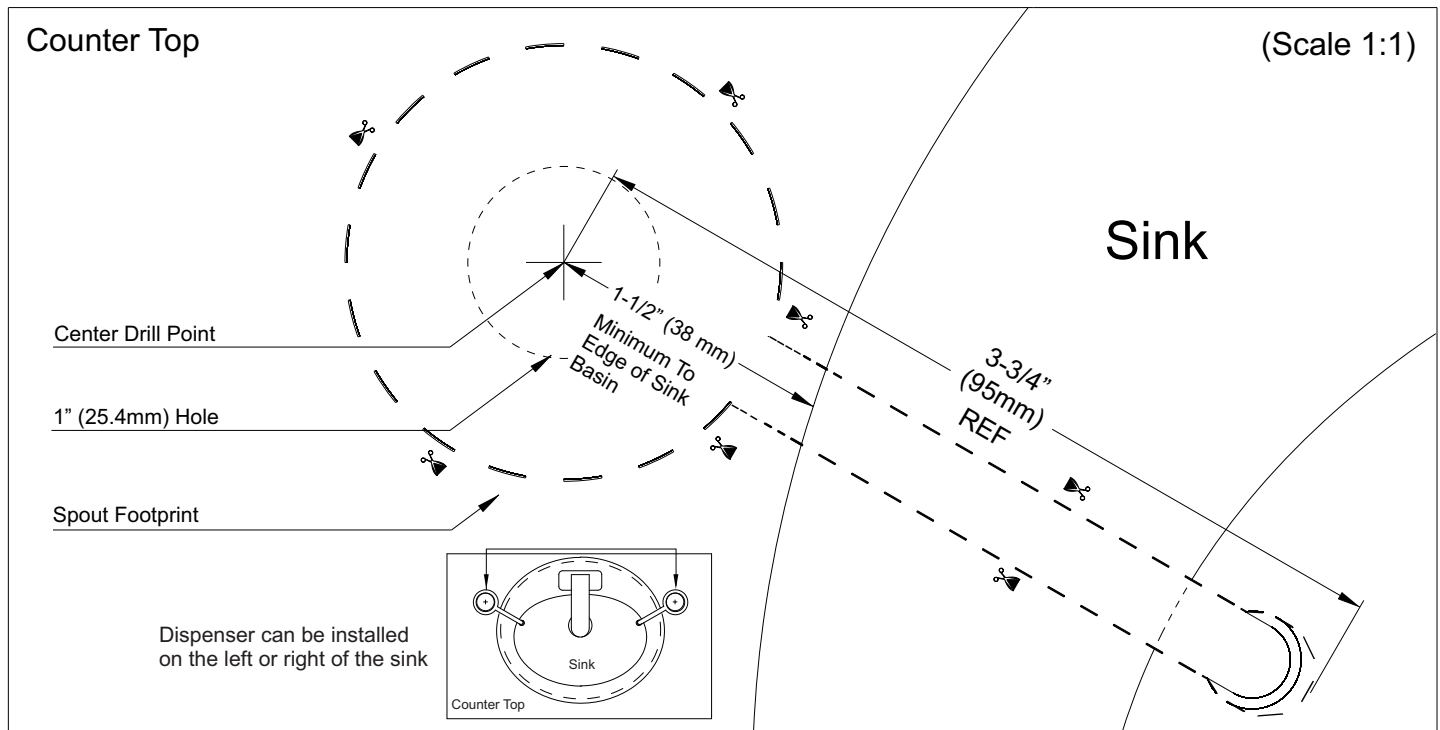
Troubleshooting:

Problem	Solution
Flashing BLUE LED	Batteries are low/drained. Replace all 4 batteries (D-size).
Flashing RED LED	Soap is low or empty. Refill soap bottle and press and hold reset button for 7 seconds to prime new soap and reset LED.
Soap does not come out of spout	Spout filter is dirty and won't pump soap through the spout. Clean or replace spout filter assembly.
Soap dispenses very weak	Wrong soap was used and pump is dirty. Refill soap bottle with water and press and hold reset button for 7 seconds to prime water through the unit. This should be repeated until only water dispenses and soap is completely flushed out. Once unit is flushed out, refill soap bottle with liquid soap. Prime unit again until soap comes out.



ASD-400 LIQUIDFLO™ AUTOMATIC LIQUID SOAP DISPENSER INSTALLATION & OPERATION MANUAL

Installation Template for Model ASD-400 Spout (Not used for Model ASD-400EL)



Warranty

AMTC WARRANTS THE ASD-400 SOAP DISPENSER TO BE FREE OF DEFECTS IN MATERIAL AND WORKMANSHIP FOR A PERIOD OF THREE (3) YEARS FROM DATE OF PURCHASE, WHEN PROPERLY INSTALLED AND UNDER NORMAL USE AND SERVICE. THESE PROVISIONS DO NOT INCLUDE THE BATTERIES SHIPPED WITH THE PRODUCT. A DEFECTIVE PRODUCT MAY BE RETURNED TO AMTC OR ITS AUTHORIZED REPRESENTATIVES WITHIN THREE (3) YEARS FROM DATE OF PURCHASE WITH THE PROPER INVOICE OF PURCHASE. AMTC, AT ITS DISCRETION, WILL REPLACE OR REPAIR DEFECTIVE PRODUCT AT NO CHARGE. CLAIMS FOR LABOR, TRANSPORTATION, AND ANY OTHER INCIDENTAL COSTS WILL NOT BE ALLOWED. AMTC WILL NOT BE RESPONSIBLE FOR ANY CONSIDERABLE DAMAGES OF ANY KIND WHATSOEVER.

FOR TECHNICAL SUPPORT PLEASE CALL TOLL FREE 1-800-874-7822 OR VISIT OUR WEBSITE AT WWW.AMTCORPORATION.COM.

MAKE SURE TO VISIT OUR WEBSITE PERIODICALLY FOR INFORMATION ON NEW PRODUCTS AND TO DOWNLOAD ANY IMPORTANT PRODUCT DOCUMENTS THAT YOU MAY NEED IN THE FUTURE.



Advanced Modern Technologies Corporation

8367 Canoga Avenue, Canoga Park, CA 91304

Tel: (818) 883-2682 Toll Free: (800) 874-7822 Fax: (818) 883-2620

www.amtcorporation.com