

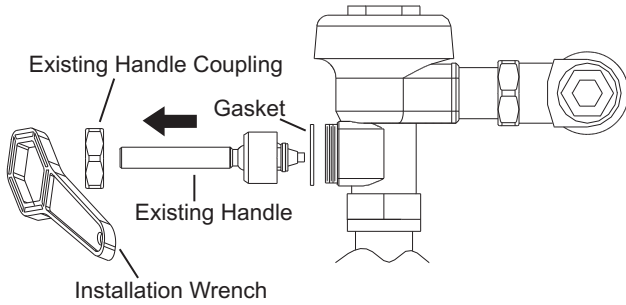
# AMTC DUALFLUSH® Handle Instruction Guide

(Refer to illustrations below)

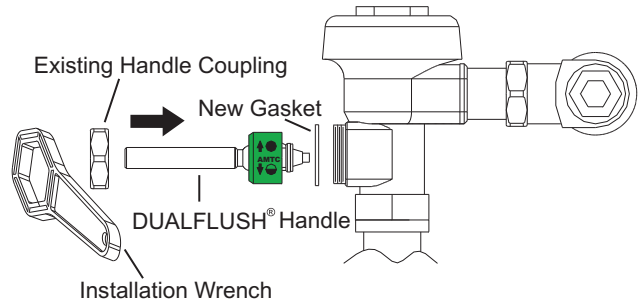
**NOTE:** Water does not need to be shut off to install DUALFLUSH® Handle, but use caution to NOT ACTIVATE the valve.

**IMPORTANT:** Make sure that existing diaphragm assembly matches the required flush volume for the existing fixture to assure proper and maximum performance.

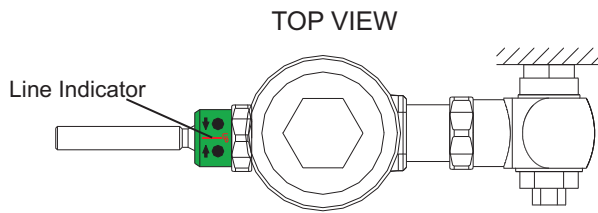
## Quick Installation Diagram:



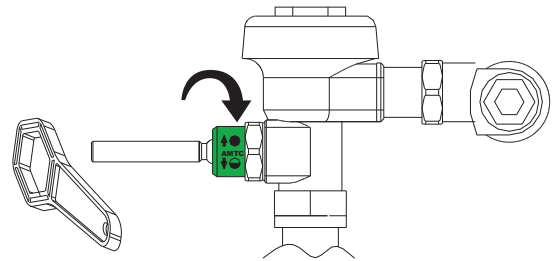
- 1 Remove Existing Handle Coupling, Existing Handle, and Gasket from Flushometer Valve Body using supplied Installation Wrench.



- 2 Replace with DUALFLUSH® Handle and New Gasket using Existing Handle Coupling.

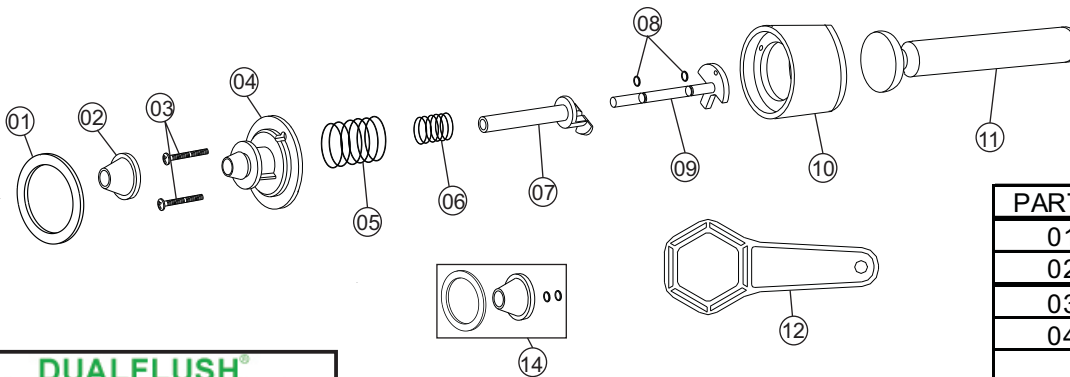


- 3 Install DUALFLUSH® Handle with "RED LINE" Indicator Facing "UP".



- 4 Tighten the Handle Coupling Securely using the supplied Installation Wrench.

## DUALFLUSH® Handle Parts Diagram:



PART #	PART NAME
01	Washer
02	Seal
03	Screw (2)
04	Bushing 1.6gpf (green) Bushing 3.5gpf (blue)
05	Outer Spring
06	Inner Spring
07	Outer Shaft
08	O-Ring (2)
09	Inner Shaft
10	Socket
11	Handle
12	Wrench
13	Wall Sign (2)
14	Seal Repair Kit



**Advanced Modern  
Technologies Corporation**

6409 Independence Ave.  
Woodland Hills, CA 91367 USA

Toll Free: (800) 874-7822 • Fax: (818) 883-2620

[www.amtcorporation.com](http://www.amtcorporation.com)